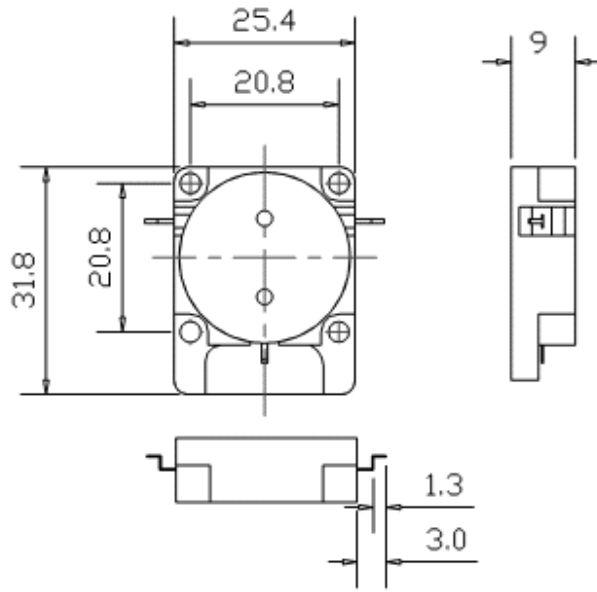


**Features**

- Microwave Circulators and Isolators for base station
- Metal Package for **drop in**
- Lead-free Production and **RoHS** Compliance

**Package Dimensions**



<p style="text-align: center;"><b>Marking</b></p> <p style="text-align: center;">****</p> <p style="text-align: center;">  → ○</p> <p style="text-align: center; color: blue;">1.805-1.880GHz</p> <p style="text-align: center; color: blue;">NDI9018</p>	Top View, Laser Marking					
	"ND":	Manufacturer's mark			"I":	Isolator
	"9018":	Part number				
	"I"	IN	"O"	OUT	→	Conduct Direction
		1.805-1.880GHz : operating Frequency Range				
	"*":	Lot number (the first two numbers of years and the last two numbers of weeks)				

**Maximum Ratings**

Rating		Value	Unit
Average Power	$P_{AVG}$	200	W
Peak Power	$P_{PX}$	1200	W
Reverse Power	$P$	150	W
Operating Temperature Range	$T_A$	-40 ~ +90	°C
Storage Temperature Range	$T_{stg}$	-55 ~ +125	°C

**Electrical Characteristics**

Reference temperature:  $T_A = 25\text{ }^\circ\text{C}$   
 Terminating source impedance:  $Z_S = 50\ \Omega$   
 Terminating load impedance:  $Z_L = 50\ \Omega$

Characteristic		Min.	Typ.	Max.	Unit
Working frequency	$f_c$	1.805		1.880	GHz
Insertion attenuation	$IL$	—	0.18	0.25	dB
Isolation	1805~1880MHz	28	30	—	dB
Isolation	1745~1940MHz	18	27	—	dB
IMD(2X65W, 1MHz space)		75	80		dBc
Input Return Loss		23	26		dB
Output Return Loss		23	26		dB
Group Delay				2.0	ns
Group Delay variation				0.5	ns

 **RoHS Compliant**

 **Electrostatic Sensitive Device**

© NEDI 2013. All Rights Reserved.

Our liability is only assumed for the circulator and isolator component(s) per se, not for applications, processes and circuits implemented within components or assemblies.

For questions on technology, prices and delivery, please contact our sales offices or e-mail [winnsky@winnsky.com](mailto:winnsky@winnsky.com)